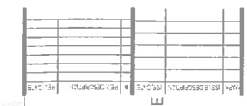
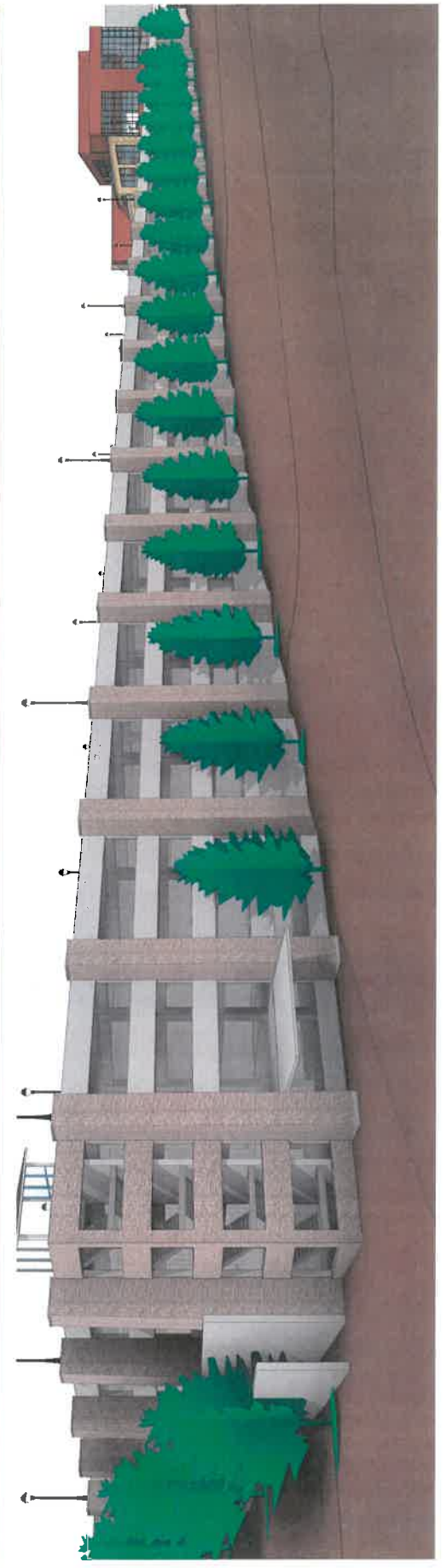


beeherwalker
Architects & Interiors
3155 EAST MAIN AVE #200
MILWAUKEE, WI 53212
TEL: 414.333.2200
WWW.BEEHERWALKER.COM



Project Address
LACALLE STATION PARKING STRUCTURE



1. This document is intended for use as a guide only. It is not intended to be used as a substitute for professional engineering or architectural services. The user of this document assumes all liability for its use. The user of this document is advised to consult with a professional engineer or architect for any specific application of this document.

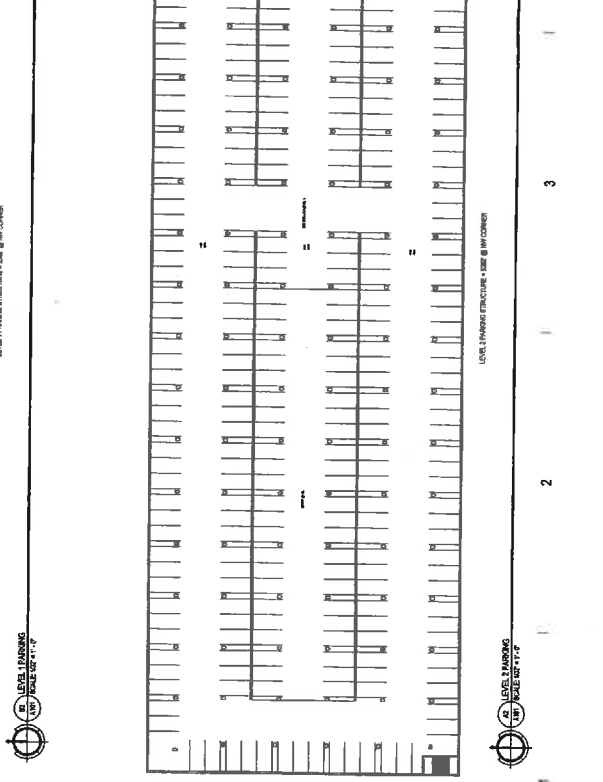
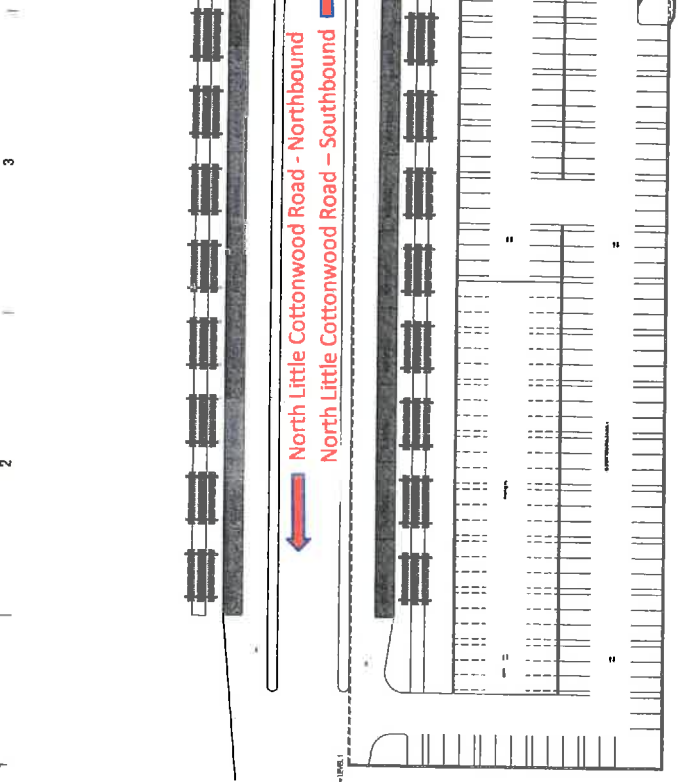
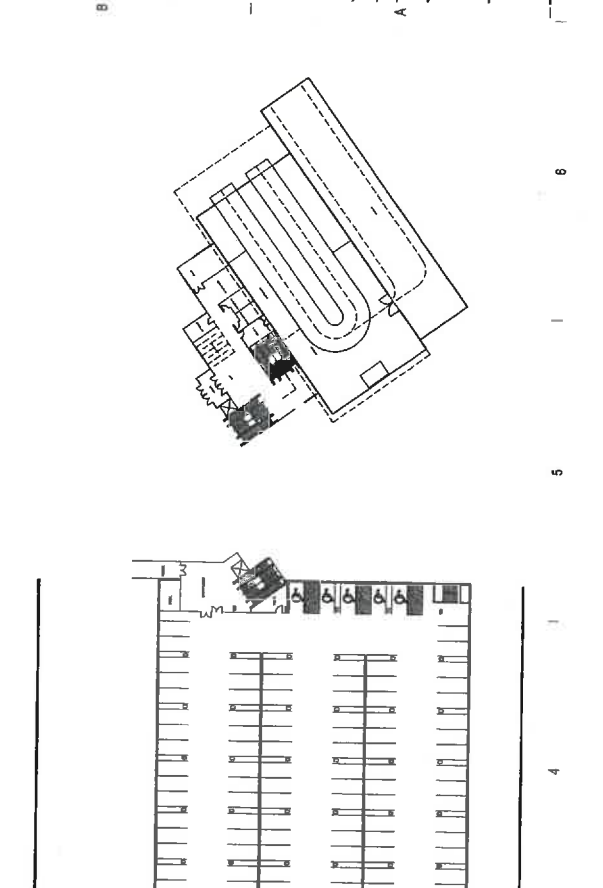
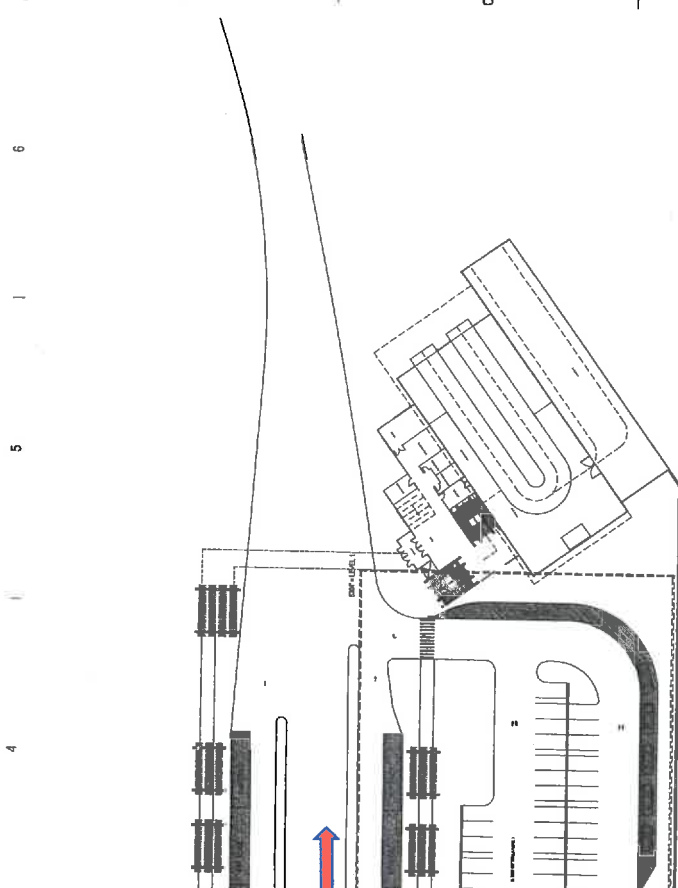
NO.	DATE	DESCRIPTION	BY	CHK'D BY
1	11/11/11	ISSUED FOR PERMITS	MM	MM
2	11/11/11	REVISIONS	MM	MM
3	11/11/11	REVISIONS	MM	MM
4	11/11/11	REVISIONS	MM	MM
5	11/11/11	REVISIONS	MM	MM
6	11/11/11	REVISIONS	MM	MM
7	11/11/11	REVISIONS	MM	MM
8	11/11/11	REVISIONS	MM	MM
9	11/11/11	REVISIONS	MM	MM
10	11/11/11	REVISIONS	MM	MM

**OLD MILL
COTTONWOOD HEIGHTS, UTAH 84121**

BWA ARCHITECTS
 115 EAST LUTHER AVE, 2ND FLOOR
 SALT LAKE CITY, UT 84143
 TEL: 313.445.4610
 FAX: 313.445.4611
 WWW.BWAARCHITECTS.COM

PROJECT NUMBER: 1111111111
 DATE: 11/11/11
 DRAWN BY: MM
 CHECKED BY: MM
 PERMIT SET

1111111111
 PROJECT NUMBER
A101





Proposed UTA Route 973 from Sandy Mobility Hub to LaCaille Station and Big Cottonwood Mobility Hub